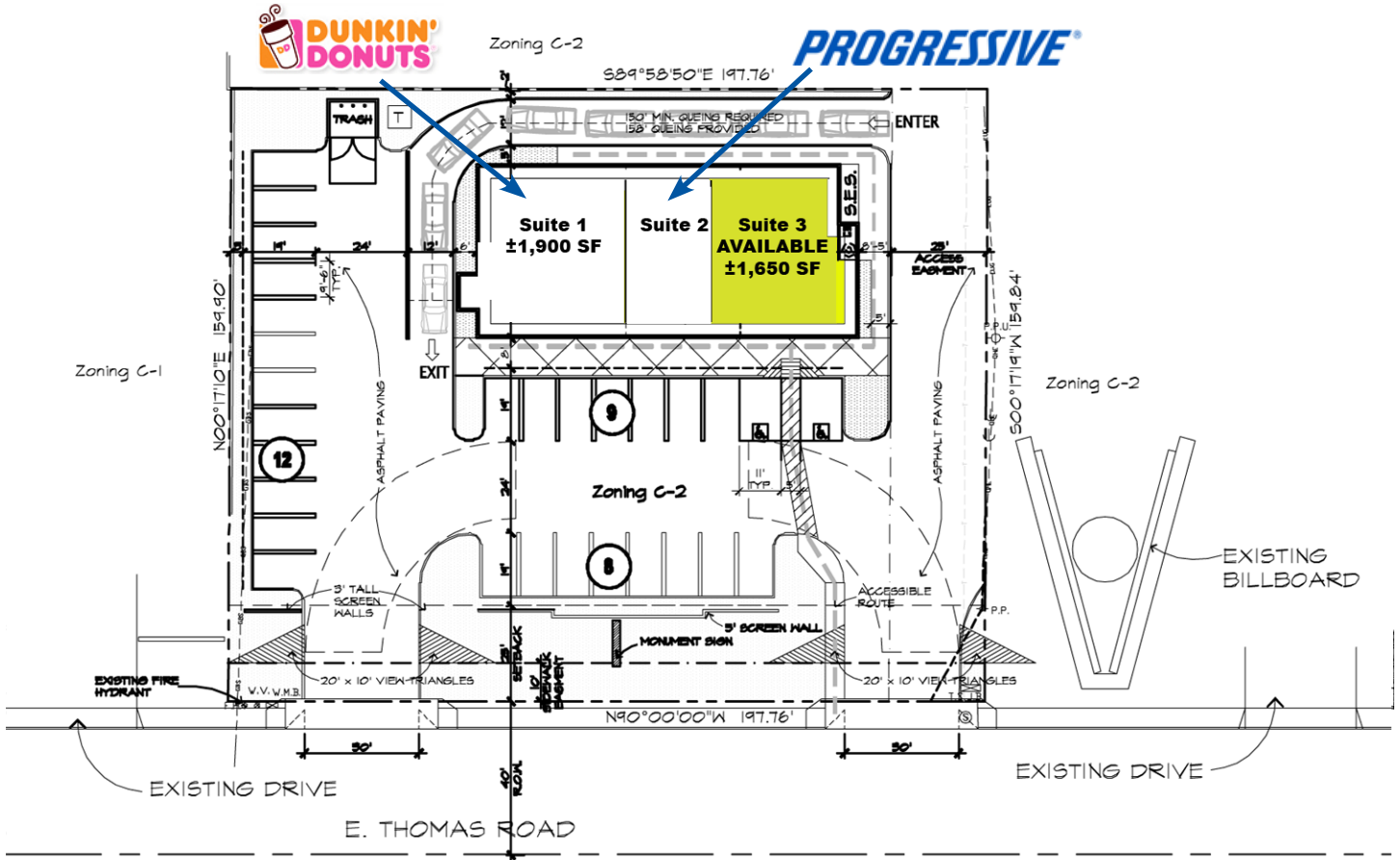


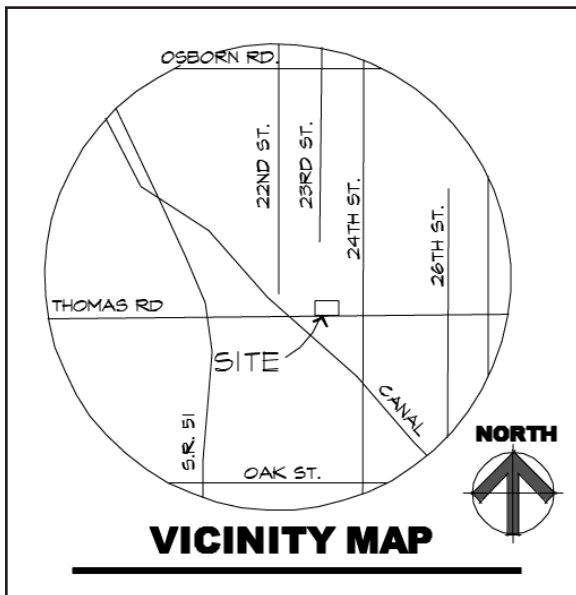
SHOP SPACE AVAILABLE FOR LEASE

NWC 24th Street & Thomas Road
Phoenix, Arizona

Preliminary Site Plan (not to scale)



PRELIMINARY SITE PLAN

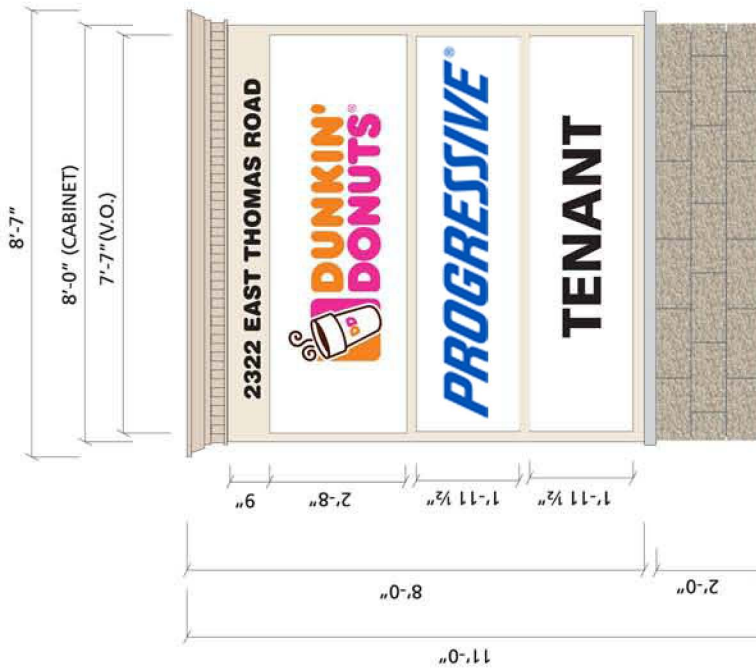


For further information please contact:

CAMERON WARREN
602-288-3471
cwarren@pcaemail.com

DAVID MERISKO
602-288-3463
dmerisko@pcaemail.com

D/F ILLUMINATED MONUMENT SIGN OPTION 3B



Double Faced Cabinet.
 Aluminum Framing
 Custom Crown with Faux Dentils
 Tenant Panels- Applied Vinyl
 On White Trans. Lexan
 Address is Reflective Black Vinyl

H/O Fluorescent Lighting
 Direct Embedded Single Pole Mounting
 Dunkin' Donuts Vinyl N.I.C.



CMU Base
 By Others.
 Base Cap N.I.C.



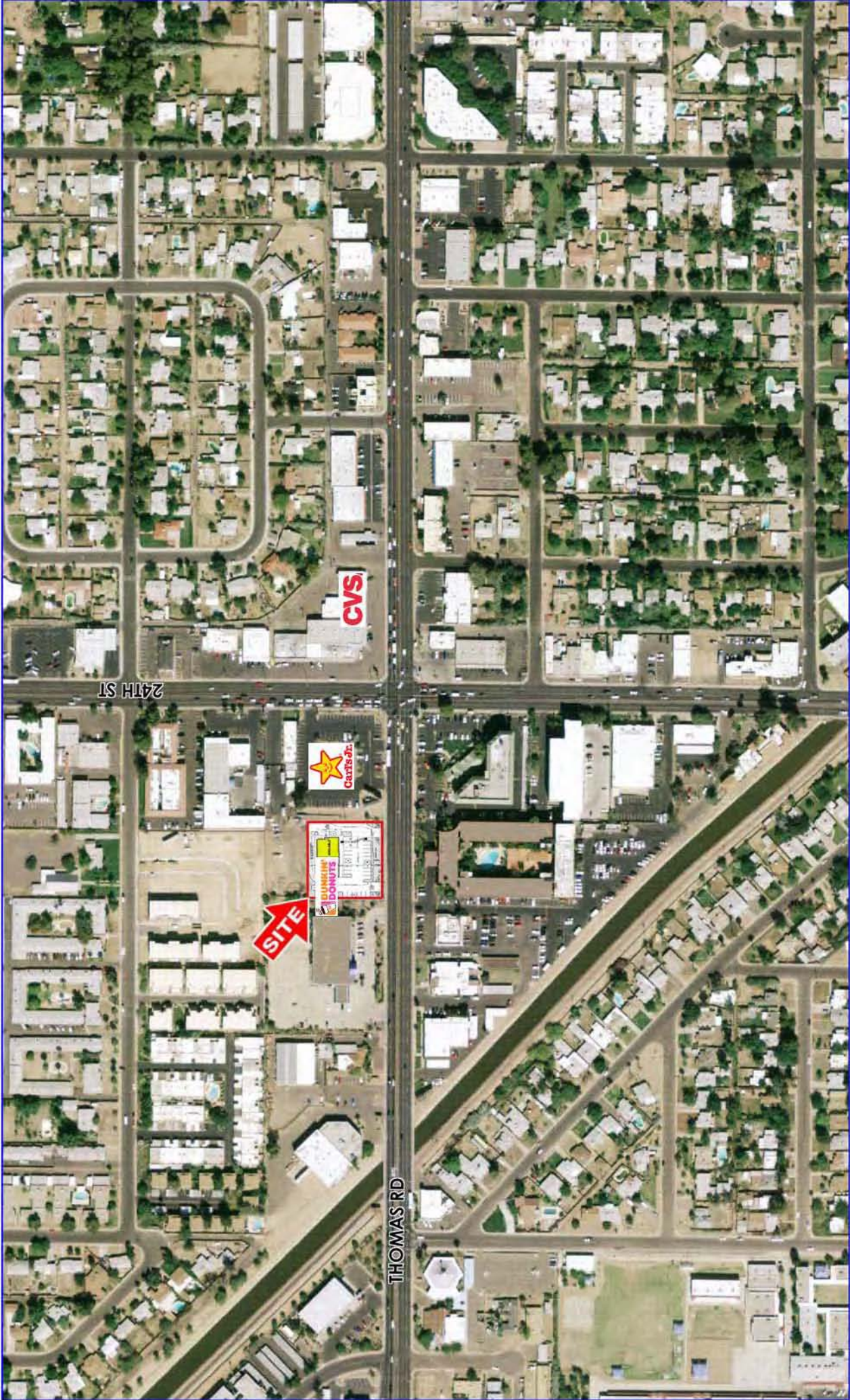
Front Elevation 3/8" = 1'-0"
 64 Sq. Ft. Per Side

Night View

Side View



Shops A-South Elevation
 scale: 3/16" = 1'-0"



24TH ST

THOMAS RD

SITE



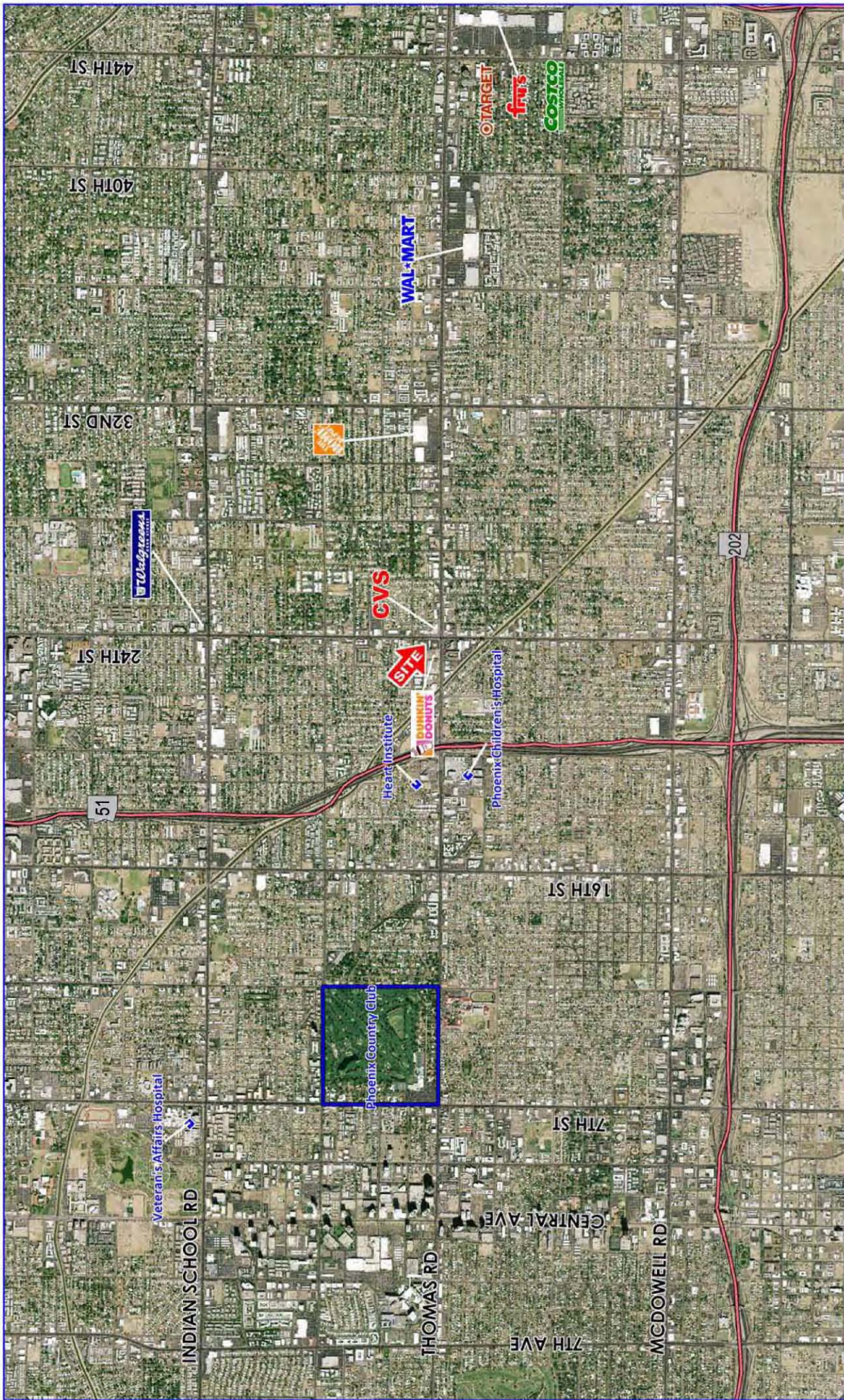
PHOENIX COMMERCIAL ADVISORS
1000 EAST CAMELOT BLVD, SUITE 111
PHOENIX, AZ 85014
TEL: 602.998.0000 FAX: 602.998.0099
www.phoenixcommercialadvisors.com



24th St & Thomas Rd
PHOENIX, ARIZONA

PHOENIX COMMERCIAL ADVISORS
CHAI LINKS
RETAIL ADVISORS





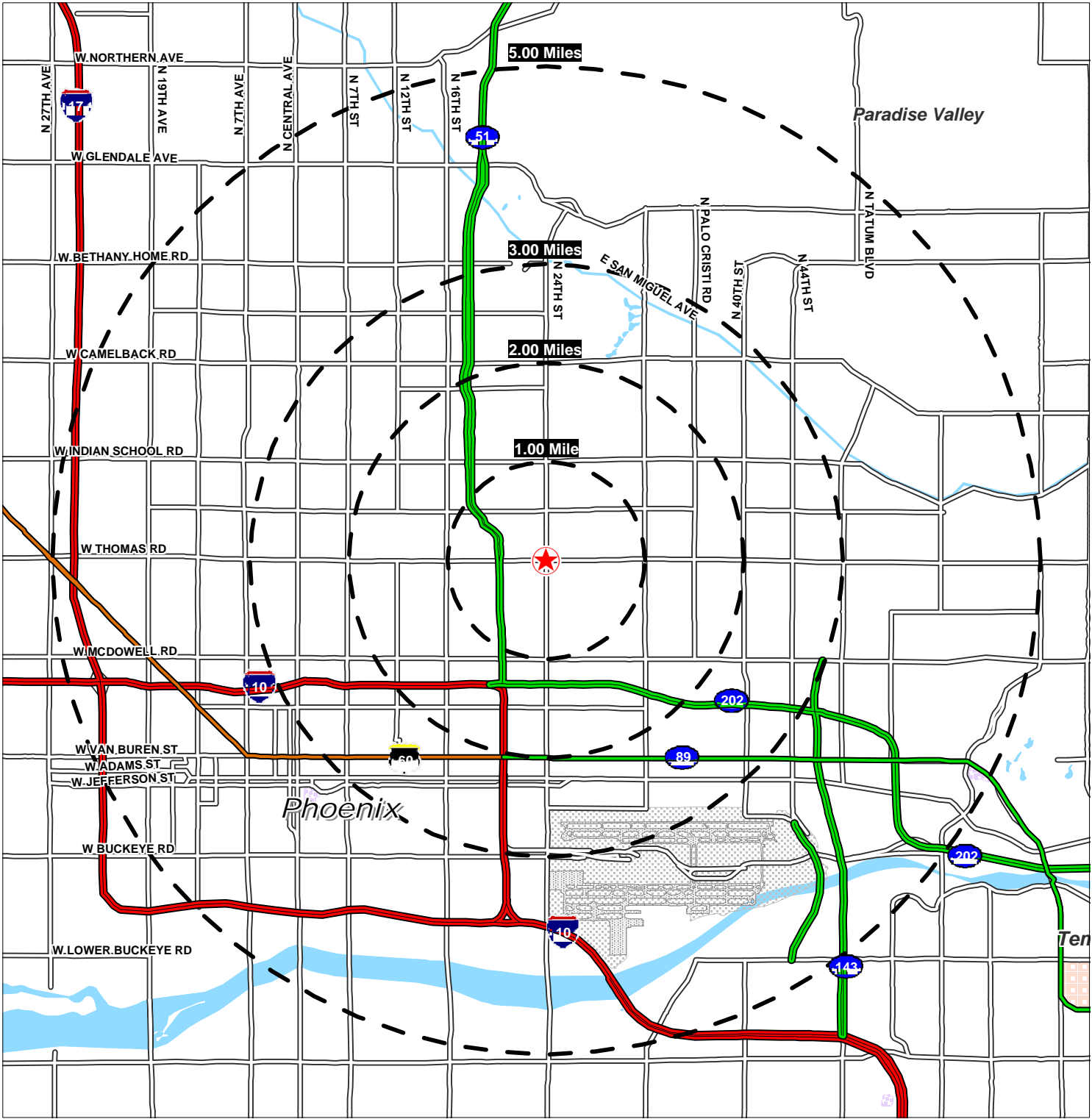
24th St & Thomas Rd PHOENIX, ARIZONA

PHOENIX COMMERCIAL ADVISORS
1001 East Camelback Road, Suite 1115
Phoenix, AZ 85014
Tel: 602.955.8888
www.phoenixcommercialadvisors.com

Member of
CHAINLINKS
RETAIL ADVISORS



Lat: 33.4803 Lon: -112.03 Zoom: 11 mi Logos are for identification purposes only and may be trademarks of their respective companies.



©2009, SITES USA Inc., Chandler, AZ (480) 491-1112. All Rights Reserved.

**24th St & Thomas Rd
Phoenix, Arizona**



November 2009

Prepared For

Phoenix Commercial Advisors

This map was produced using data from private and government sources deemed to be reliable. The information herein is provided without representation or warranty.

DEMOGRAPHIC PROFILE EXPANDED

1990 - 2000 Census, 2009 Estimates & 2014 Projections

Calculated using Proportional Block Groups

Prepared For

Phoenix Commercial Advisors

Lat/Lon: 33.480343/-112.030103

November 2009



RF5

24th St & Thomas Rd Phoenix, Arizona	1.00 mi radius		2.00 mi radius		3.00 mi radius		5.00 mi radius	
Population								
Estimated Population (2009)	23,174		97,403		173,648		325,612	
Census Population (1990)	18,266		73,312		131,947		259,970	
Census Population (2000)	25,017		94,972		163,828		311,473	
Projected Population (2014)	24,059		106,623		199,213		362,639	
Forecasted Population (2019)	23,852		113,439		219,188		391,488	
Historical Annual Growth (1990 to 2000)	6,752	3.7%	21,661	3.0%	31,881	2.4%	51,502	2.0%
Historical Annual Growth (2000 to 2009)	-1,844	-0.8%	2,430	0.3%	9,820	0.7%	14,139	0.5%
Projected Annual Growth (2009 to 2014)	885	0.8%	9,221	1.9%	25,566	2.9%	37,027	2.3%
Est. Population Density (2009)	7,382.46	<i>psm</i>	7,756.22	<i>psm</i>	6,151.17	<i>psm</i>	4,221.82	<i>psm</i>
Trade Area Size	3.14	<i>sq mi</i>	12.56	<i>sq mi</i>	28.23	<i>sq mi</i>	77.13	<i>sq mi</i>
Households								
Estimated Households (2009)	7,062		31,358		59,814		115,041	
Census Households (1990)	7,612		29,852		55,110		108,484	
Census Households (2000)	8,229		33,100		61,322		119,616	
Projected Households (2014)	6,907		32,682		65,820		121,746	
Forecasted Households (2019)	10,674		50,601		101,952		188,670	
Households with Children (2009)	2,673	37.9%	10,820	34.5%	18,723	31.3%	34,914	30.3%
Average Household Size (2009)	3.24		3.01		2.83		2.75	
Average Household Income								
Est. Average Household Income (2009)	\$50,076		\$50,268		\$55,301		\$65,036	
Proj. Average Household Income (2014)	\$52,504		\$52,585		\$57,997		\$66,301	
Average Family Income (2009)	\$57,989		\$59,662		\$66,849		\$82,454	
Median Household Income								
Est. Median Household Income (2009)	\$38,480		\$38,873		\$42,740		\$50,505	
Proj. Median Household Income (2014)	\$41,088		\$41,447		\$45,825		\$53,054	
Median Family Income (2009)	\$42,916		\$44,363		\$50,414		\$64,181	
Per Capita Income								
Est. Per Capita Income (2009)	\$15,579		\$16,820		\$19,614		\$23,693	
Proj. Per Capita Income (2014)	\$15,380		\$16,697		\$19,651		\$22,897	
Per Capita Income Est. 5 year change	-\$199	-1.3%	-\$124	-0.7%	\$37	0.2%	-\$796	-3.4%
Other Income								
Est. Median Disposable Income (2009)	\$33,782		\$33,835		\$36,685		\$42,536	
Est. Median Disposable Income (2014)	\$35,654		\$35,745		\$38,979		\$44,415	
Disposable Income Est. 5 year change	\$1,872	5.5%	\$1,910	5.6%	\$2,294	6.3%	\$1,879	4.4%
Est. Average Household Net Worth (2009)	\$333,146		\$334,939		\$368,602		\$425,816	
Daytime Demos								
Total Number of Businesses (2009)	1,115		4,585		12,288		22,175	
Total Number of Employees (2009)	11,099		55,297		180,190		388,638	
Company Headqtrs: Businesses (2009)	3	0.2%	33	0.7%	113	0.9%	264	1.2%
Company Headqtrs: Employees (2009)	54	0.5%	1,640	3.0%	11,430	6.3%	38,260	9.8%
Unemployment Rate (2009)	7.10%		7.60%		7.30%		6.90%	
Employee Population per Business	10.0 to 1		12.1 to 1		14.7 to 1		17.5 to 1	
Residential Population per Business	20.8 to 1		21.2 to 1		14.1 to 1		14.7 to 1	

This report was produced using data from private and government sources deemed to be reliable. The information herein is provided without representation or warranty.

DEMOGRAPHIC PROFILE EXPANDED

1990 - 2000 Census, 2009 Estimates & 2014 Projections

Calculated using Proportional Block Groups

Prepared For

Phoenix Commercial Advisors

Lat/Lon: 33.480343/-112.030103

November 2009



RF5

24th St & Thomas Rd Phoenix, Arizona	1.00 mi radius		2.00 mi radius		3.00 mi radius		5.00 mi radius	
---	----------------	--	----------------	--	----------------	--	----------------	--

Race & Ethnicity

White (2009)	15,397	66.4%	64,154	65.9%	116,804	67.3%	222,080	68.2%
Black or African American (2009)	1,106	4.8%	5,954	6.1%	10,759	6.2%	22,022	6.8%
American Indian & Alaska Native (2009)	724	3.1%	3,670	3.8%	6,530	3.8%	12,444	3.8%
Asian (2009)	475	2.1%	1,785	1.8%	3,414	2.0%	7,679	2.4%
Hawaiian & Pacific Islander (2009)	31	0.1%	181	0.2%	343	0.2%	634	0.2%
Other Race (2009)	4,700	20.3%	18,518	19.0%	30,308	17.5%	50,348	15.5%
Two or More Races (2009)	739	3.2%	3,141	3.2%	5,490	3.2%	10,405	3.2%
Not Hispanic or Latino Population (2009)	8,660	37.4%	40,847	41.9%	81,324	46.8%	169,593	52.1%
Hispanic or Latino Population (2009)	14,513	62.6%	56,555	58.1%	92,324	53.2%	156,019	47.9%
Not of Hispanic Origin Population (1990)	13,466	73.7%	51,374	70.1%	94,069	71.3%	193,256	74.3%
Hispanic Origin Population (1990)	4,799	26.3%	21,938	29.9%	37,878	28.7%	66,714	25.7%
Not Hispanic or Latino Population (2000)	10,085	40.3%	43,677	46.0%	84,973	51.9%	179,811	57.7%
Hispanic or Latino Population (2000)	14,932	59.7%	51,295	54.0%	78,855	48.1%	131,661	42.3%
Not Hispanic or Latino Population (2014)	8,834	36.7%	44,464	41.7%	93,079	46.7%	184,210	50.8%
Hispanic or Latino Population (2014)	15,225	63.3%	62,160	58.3%	106,135	53.3%	178,429	49.2%
Hist. Hispanic Ann Growth (1990 to 2009)	9,714	10.7%	34,618	8.3%	54,446	7.6%	89,304	7.0%
Proj. Hispanic Ann Growth (2009 to 2014)	712	1.0%	5,604	2.0%	13,811	3.0%	22,410	2.9%

Age Distribution

Age 0 to 4 yrs (2009)	2,194	9.5%	8,895	9.1%	15,354	8.8%	27,367	8.4%
Age 5 to 9 yrs (2009)	2,053	8.9%	8,153	8.4%	13,872	8.0%	25,144	7.7%
Age 10 to 14 yrs (2009)	1,693	7.3%	6,770	7.0%	11,535	6.6%	21,461	6.6%
Age 15 to 19 yrs (2009)	1,697	7.3%	6,979	7.2%	11,812	6.8%	21,650	6.6%
Age 20 to 24 yrs (2009)	1,836	7.9%	7,777	8.0%	13,642	7.9%	24,380	7.5%
Age 25 to 29 yrs (2009)	1,945	8.4%	8,513	8.7%	15,288	8.8%	27,286	8.4%
Age 30 to 34 yrs (2009)	1,924	8.3%	8,146	8.4%	14,573	8.4%	26,338	8.1%
Age 35 to 39 yrs (2009)	1,740	7.5%	7,255	7.4%	12,975	7.5%	23,951	7.4%
Age 40 to 44 yrs (2009)	1,565	6.8%	6,572	6.7%	11,779	6.8%	22,491	6.9%
Age 45 to 49 yrs (2009)	1,457	6.3%	6,210	6.4%	11,308	6.5%	22,073	6.8%
Age 50 to 54 yrs (2009)	1,198	5.2%	5,136	5.3%	9,567	5.5%	19,021	5.8%
Age 55 to 59 yrs (2009)	940	4.1%	4,097	4.2%	7,739	4.5%	15,641	4.8%
Age 60 to 64 yrs (2009)	818	3.5%	3,349	3.4%	6,323	3.6%	12,899	4.0%
Age 65 to 74 yrs (2009)	1,017	4.4%	4,412	4.5%	8,509	4.9%	17,319	5.3%
Age 75 to 84 yrs (2009)	723	3.1%	3,215	3.3%	6,157	3.5%	12,406	3.8%
Age 85 yrs plus (2009)	373	1.6%	1,925	2.0%	3,215	1.9%	6,184	1.9%
Median Age (2009)	29.7	yrs	30.4	yrs	31.2	yrs	32.5	yrs

Gender Age Distribution

Female Population (2009)	11,098	47.9%	46,466	47.7%	82,680	47.6%	155,256	47.7%
Age 0 to 19 yrs (2009)	3,744	33.7%	14,890	32.0%	25,358	30.7%	45,985	29.6%
Age 20 to 64 yrs (2009)	6,155	55.5%	25,899	55.7%	46,920	56.7%	88,555	57.0%
Age 65 yrs plus (2009)	1,199	10.8%	5,678	12.2%	10,402	12.6%	20,715	13.3%
Female Median Age (2009)	30.1	yrs	31.2	yrs	32.0	yrs	33.5	yrs
Male Population (2009)	12,075	52.1%	50,936	52.3%	90,968	52.4%	170,356	52.3%
Age 0 to 19 yrs (2009)	3,893	32.2%	15,906	31.2%	27,214	29.9%	49,637	29.1%
Age 20 to 64 yrs (2009)	7,269	60.2%	31,155	61.2%	56,275	61.9%	105,526	61.9%
Age 65 yrs plus (2009)	914	7.6%	3,875	7.6%	7,479	8.2%	15,194	8.9%
Male Median Age (2009)	29.4	yrs	29.8	yrs	30.6	yrs	31.8	yrs

This report was produced using data from private and government sources deemed to be reliable. The information herein is provided without representation or warranty.

DEMOGRAPHIC PROFILE EXPANDED

1990 - 2000 Census, 2009 Estimates & 2014 Projections

Calculated using Proportional Block Groups

Prepared For

Phoenix Commercial Advisors

Lat/Lon: 33.480343/-112.030103

November 2009



RF5

24th St & Thomas Rd Phoenix, Arizona

1.00 mi radius 2.00 mi radius 3.00 mi radius 5.00 mi radius

Household Income Distribution

HH Income \$200,000 or More (2009)	147	2.1%	705	2.2%	1,908	3.2%	5,919	5.1%
HH Income \$150,000 to \$199,999 (2009)	57	0.8%	435	1.4%	1,161	1.9%	2,927	2.5%
HH Income \$100,000 to \$149,999 (2009)	429	6.1%	1,956	6.2%	4,198	7.0%	9,135	7.9%
HH Income \$75,000 to \$99,999 (2009)	598	8.5%	2,423	7.7%	4,953	8.3%	9,895	8.6%
HH Income \$50,000 to \$74,999 (2009)	1,233	17.5%	5,688	18.1%	10,548	17.6%	19,281	16.8%
HH Income \$35,000 to \$49,999 (2009)	1,381	19.6%	5,614	17.9%	10,572	17.7%	19,103	16.6%
HH Income \$25,000 to \$34,999 (2009)	1,108	15.7%	4,392	14.0%	8,109	13.6%	14,771	12.8%
HH Income \$15,000 to \$24,999 (2009)	1,075	15.2%	4,926	15.7%	8,899	14.9%	16,080	14.0%
HH Income \$0 to \$14,999 (2009)	1,033	14.6%	5,218	16.6%	9,467	15.8%	17,929	15.6%
HH Income \$35,000+ (2009)	3,845	54.5%	16,821	53.6%	33,340	55.7%	66,260	57.6%
HH Income \$75,000+ (2009)	1,231	17.4%	5,519	17.6%	12,220	20.4%	27,876	24.2%

Housing

Total Housing Units (2009)	7,743		34,679		68,019		131,100	
Housing Units, Occupied (2009)	7,062	91.2%	31,358	90.4%	59,814	87.9%	115,041	87.8%
<i>Housing Units, Owner-Occupied (2009)</i>	3,480	49.3%	12,982	41.4%	24,332	40.7%	49,912	43.4%
<i>Housing Units, Renter-Occupied (2009)</i>	3,582	50.7%	18,376	58.6%	35,481	59.3%	65,129	56.6%
Housing Units, Vacant (2009)	681	8.8%	3,321	9.6%	8,205	12.1%	16,059	12.2%
Median Years in Residence (2009)	2.6	<i>yrs</i>	2.5	<i>yrs</i>	2.4	<i>yrs</i>	2.6	<i>yrs</i>

Marital Status

Never Married (2009)	5,608	32.6%	26,184	35.6%	47,264	35.6%	86,551	34.4%
Now Married (2009)	6,902	40.1%	26,322	35.8%	47,972	36.2%	94,650	37.7%
Separated (2009)	1,602	9.3%	7,708	10.5%	13,066	9.8%	22,885	9.1%
Widowed (2009)	985	5.7%	4,226	5.7%	7,492	5.6%	14,796	5.9%
Divorced (2009)	2,107	12.2%	9,057	12.3%	16,879	12.7%	32,450	12.9%

Household Type

Population Family (2009)	18,043	77.9%	71,575	73.5%	124,978	72.0%	234,150	71.9%
Population Non-Family (2009)	4,857	21.0%	22,822	23.4%	44,381	25.6%	82,544	25.4%
Population Group Qtrs (2009)	273	1.2%	3,006	3.1%	4,288	2.5%	8,918	2.7%
Family Households (2009)	4,140	58.6%	16,884	53.8%	30,677	51.3%	59,551	51.8%
Married Couple With Children (2009)	1,551	22.5%	5,828	22.1%	9,991	20.8%	18,676	19.7%
Average Family Household Size (2009)	4.36		4.24		4.07		3.93	
Non-Family Households (2009)	2,922	41.4%	14,475	46.2%	29,137	48.7%	55,490	48.2%

Household Size

1 Person Household (2009)	2,264	32.1%	11,558	36.9%	23,423	39.2%	44,921	39.0%
2 Person Households (2009)	1,166	16.5%	5,248	16.7%	10,688	17.9%	21,625	18.8%
3 Person Households (2009)	652	9.2%	2,690	8.6%	5,000	8.4%	9,836	8.5%
4 Person Households (2009)	1,200	17.0%	4,795	15.3%	8,825	14.8%	17,470	15.2%
5 Person Households (2009)	825	11.7%	3,247	10.4%	5,573	9.3%	10,408	9.0%
6+ Person Households (2009)	954	13.5%	3,819	12.2%	6,304	10.5%	10,780	9.4%

Household Vehicles

Total Vehicles Available (2009)	10,560		45,224		86,768		171,793	
Household: 0 Vehicles Available (2009)	913	12.9%	4,958	15.8%	9,215	15.4%	17,200	15.0%
Household: 1 Vehicles Available (2009)	3,116	44.1%	14,215	45.3%	27,794	46.5%	51,875	45.1%
Household: 2+ Vehicles Available (2009)	3,033	42.9%	12,184	38.9%	22,804	38.1%	45,966	40.0%
Average Vehicles Per Household (2009)	1.5		1.4		1.5		1.5	

This report was produced using data from private and government sources deemed to be reliable. The information herein is provided without representation or warranty.

DEMOGRAPHIC PROFILE EXPANDED

1990 - 2000 Census, 2009 Estimates & 2014 Projections

Calculated using Proportional Block Groups

Prepared For

Phoenix Commercial Advisors

Lat/Lon: 33.480343/-112.030103

November 2009



RF5

24th St & Thomas Rd Phoenix, Arizona

Labor Force

	1.00 mi radius		2.00 mi radius		3.00 mi radius		5.00 mi radius	
Est. Labor: Population Age 16+ (2009)	16,891		72,307		130,624		247,504	
Est. Civilian Employed (2009)	9,390	55.6%	39,280	54.3%	72,782	55.7%	139,916	56.5%
Est. Civilian Unemployed (2009)	1,207	7.1%	5,464	7.6%	9,509	7.3%	17,106	6.9%
Est. in Armed Forces (2009)	7	0.0%	34	0.0%	90	0.1%	172	0.1%
Est. not in Labor Force (2009)	6,287	37.2%	27,529	38.1%	48,242	36.9%	90,311	36.5%

Occupation

	1.00 mi radius		2.00 mi radius		3.00 mi radius		5.00 mi radius	
Occupation: Population Age 16+ (2000)	10,208		38,523		69,566		135,616	
Mgmt, Business, & Financial Operations (200)	739	7.2%	3,471	9.0%	7,645	11.0%	16,619	12.3%
Professional and Related (2000)	945	9.3%	4,894	12.7%	11,122	16.0%	24,100	17.8%
Service (2000)	2,501	24.5%	9,296	24.1%	14,782	21.2%	25,743	19.0%
Sales and Office (2000)	2,536	24.8%	9,554	24.8%	17,915	25.8%	36,139	26.6%
Farming, Fishing, and Forestry (2000)	21	0.2%	91	0.2%	174	0.2%	293	0.2%
Construct, Extraction, & Maintenance (2000)	1,755	17.2%	5,976	15.5%	9,475	13.6%	16,826	12.4%
Production, Transp. & Material Moving (2000)	1,712	16.8%	5,240	13.6%	8,455	12.2%	15,897	11.7%
Percent White Collar Workers (2000)	41.3%		46.5%		52.7%		56.7%	
Percent Blue Collar Workers (2000)	58.7%		53.5%		47.3%		43.3%	

Consumer Expenditure (in \$,000,000s)

	1.00 mi radius		2.00 mi radius		3.00 mi radius		5.00 mi radius	
Total Household Expenditure (2009)	\$308		\$1,364		\$2,759		\$5,883	
Total Non-Retail Expenditures (2009)	\$176	57.3%	\$781	57.3%	\$1,581	57.3%	\$3,378	57.4%
Total Retail Expenditures (2009)	\$132	42.7%	\$583	42.7%	\$1,178	42.7%	\$2,504	42.6%
Apparel (2009)	\$15	4.8%	\$66	4.8%	\$133	4.8%	\$285	4.8%
Contributions (2009)	\$10	3.4%	\$47	3.5%	\$99	3.6%	\$227	3.9%
Education (2009)	\$7	2.2%	\$31	2.3%	\$66	2.4%	\$149	2.5%
Entertainment (2009)	\$17	5.5%	\$75	5.5%	\$153	5.5%	\$327	5.6%
Food And Beverages (2009)	\$49	15.8%	\$215	15.8%	\$431	15.6%	\$904	15.4%
Furnishings And Equipment (2009)	\$13	4.2%	\$57	4.2%	\$117	4.3%	\$255	4.3%
Gifts (2009)	\$8	2.4%	\$34	2.5%	\$71	2.6%	\$158	2.7%
Health Care (2009)	\$20	6.4%	\$86	6.3%	\$173	6.3%	\$359	6.1%
Household Operations (2009)	\$10	3.4%	\$47	3.4%	\$96	3.5%	\$213	3.6%
Miscellaneous Expenses (2009)	\$5	1.7%	\$23	1.7%	\$47	1.7%	\$98	1.7%
Personal Care (2009)	\$5	1.5%	\$20	1.5%	\$40	1.5%	\$85	1.5%
Personal Insurance (2009)	\$3	1.0%	\$13	1.0%	\$27	1.0%	\$61	1.0%
Reading (2009)	\$1	0.3%	\$4	0.3%	\$9	0.3%	\$19	0.3%
Shelter (2009)	\$59	19.2%	\$262	19.2%	\$531	19.2%	\$1,138	19.4%
Tobacco (2009)	\$2	0.7%	\$10	0.7%	\$19	0.7%	\$39	0.7%
Transportation (2009)	\$62	20.1%	\$272	19.9%	\$547	19.8%	\$1,150	19.6%
Utilities (2009)	\$23	7.4%	\$101	7.4%	\$201	7.3%	\$415	7.1%

Educational Attainment

	1.00 mi radius		2.00 mi radius		3.00 mi radius		5.00 mi radius	
Adult Population (25 Years or Older) (2009)	13,701		58,830		107,434		205,610	
Elementary (0 to 8) (2009)	2,972	21.7%	12,176	20.7%	20,190	18.8%	33,538	16.3%
Some High School (9 to 11) (2009)	1,751	12.8%	7,832	13.3%	13,090	12.2%	22,605	11.0%
High School Graduate (12) (2009)	3,778	27.6%	14,973	25.5%	25,541	23.8%	47,117	22.9%
Some College (13 to 16) (2009)	2,487	18.2%	10,376	17.6%	19,049	17.7%	38,104	18.5%
Associate Degree Only (2009)	875	6.4%	3,651	6.2%	6,873	6.4%	12,905	6.3%
Bachelor Degree Only (2009)	1,195	8.7%	6,169	10.5%	13,717	12.8%	29,896	14.5%
Graduate Degree (2009)	641	4.7%	3,653	6.2%	8,974	8.4%	21,445	10.4%

This report was produced using data from private and government sources deemed to be reliable. The information herein is provided without representation or warranty.

DEMOGRAPHIC PROFILE EXPANDED

1990 - 2000 Census, 2009 Estimates & 2014 Projections

Calculated using Proportional Block Groups

Prepared For

Phoenix Commercial Advisors

Lat/Lon: 33.480343/-112.030103

November 2009



RF5

24th St & Thomas Rd Phoenix, Arizona

	1.00 mi radius		2.00 mi radius		3.00 mi radius		5.00 mi radius	
Units In Structure								
1 Detached Unit (2000)	4,289	49.4%	15,284	43.3%	27,099	40.5%	54,681	42.0%
1 Attached Unit (2000)	597	6.9%	2,208	6.3%	4,153	6.2%	9,676	7.4%
2 to 4 Units (2000)	941	10.8%	3,811	10.8%	6,783	10.1%	12,864	9.9%
5 to 9 Units (2000)	371	4.3%	2,131	6.0%	3,738	5.6%	7,205	5.5%
10 to 19 Units (2000)	481	5.5%	2,413	6.8%	5,009	7.5%	8,811	6.8%
20 to 49 Units (2000)	469	5.4%	2,445	6.9%	5,484	8.2%	9,998	7.7%
50 or more Units (2000)	1,207	13.9%	6,233	17.7%	12,874	19.2%	24,131	18.5%
Mobile Home or Trailer (2000)	328	3.8%	741	2.1%	1,693	2.5%	2,710	2.1%
Other Structure (2000)	0		7	0.0%	48	0.1%	137	0.1%
Homes Built By Year								
Homes Built 1999 to 2000	67	0.8%	457	1.3%	1,777	2.7%	2,768	2.1%
Homes Built 1995 to 1998	56	0.7%	872	2.5%	2,274	3.4%	3,933	3.0%
Homes Built 1990 to 1994	159	1.8%	958	2.7%	1,870	2.8%	3,419	2.6%
Homes Built 1980 to 1989	1,018	11.7%	3,964	11.2%	7,469	11.2%	15,472	11.9%
Homes Built 1970 to 1979	1,707	19.7%	6,393	18.1%	12,523	18.7%	26,243	20.2%
Homes Built 1960 to 1969	1,883	21.7%	6,642	18.8%	12,277	18.4%	23,701	18.2%
Homes Built 1950 to 1959	2,052	23.6%	9,020	25.6%	17,233	25.8%	33,217	25.5%
Homes Built Before 1949	1,740	20.0%	6,969	19.8%	11,458	17.1%	21,457	16.5%
Home Values								
Home Values \$1,000,000 or More (2000)	0		13	0.1%	100	0.5%	675	1.5%
Home Values \$500,000 to \$999,999 (2000)	0		49	0.4%	274	1.2%	1,978	4.3%
Home Values \$400,000 to \$499,999 (2000)	0		70	0.6%	342	1.6%	1,512	3.3%
Home Values \$300,000 to \$399,999 (2000)	16	0.5%	64	0.5%	486	2.2%	2,257	4.9%
Home Values \$200,000 to \$299,999 (2000)	44	1.3%	237	1.9%	1,556	7.1%	4,628	10.0%
Home Values \$150,000 to \$199,999 (2000)	124	3.6%	958	7.8%	2,596	11.8%	5,519	11.9%
Home Values \$100,000 to \$149,999 (2000)	873	25.6%	3,224	26.3%	5,781	26.3%	11,289	24.3%
Home Values \$70,000 to \$99,999 (2000)	1,514	44.3%	5,012	40.9%	6,993	31.8%	11,317	24.3%
Home Values \$50,000 to \$69,999 (2000)	704	20.6%	1,974	16.1%	2,719	12.4%	4,899	10.5%
Home Values \$25,000 to \$49,999 (2000)	125	3.7%	558	4.6%	1,028	4.7%	2,054	4.4%
Home Values \$0 to \$24,999 (2000)	13	0.4%	88	0.7%	128	0.6%	363	0.8%
Owner Occupied Median Home Value (2000)	\$88,901		\$99,741		\$127,091		\$169,167	
Renter Occupied Median Rent (2000)	\$433		\$454		\$481		\$478	
Transportation To Work								
Drive to Work Alone (2000)	6,116	59.9%	23,630	61.3%	44,231	63.5%	89,148	65.7%
Drive to Work in Carpool (2000)	2,564	25.1%	9,182	23.8%	14,341	20.6%	25,518	18.8%
Travel to Work - Public Transportation (2000)	719	7.0%	2,415	6.3%	4,300	6.2%	7,853	5.8%
Drive to Work on Motorcycle (2000)	15	0.2%	63	0.2%	125	0.2%	312	0.2%
Walk or Bicycle to Work (2000)	434	4.3%	1,800	4.7%	3,760	5.4%	6,734	5.0%
Other Means (2000)	142	1.4%	591	1.5%	928	1.3%	1,775	1.3%
Work at Home (2000)	224	2.2%	870	2.3%	1,969	2.8%	4,417	3.3%
Travel Time								
Travel to Work in 14 Minutes or Less (2000)	2,322	23.2%	10,084	26.8%	19,696	29.1%	38,727	29.5%
Travel to Work in 14 to 29 Minutes (2000)	4,153	41.6%	15,408	40.9%	27,833	41.1%	54,870	41.8%
Travel to Work in 30 to 59 Minutes (2000)	2,784	27.9%	9,718	25.8%	15,977	23.6%	30,369	23.1%
Travel to Work in 60 Minutes or More (2000)	731	7.3%	2,470	6.6%	4,178	6.2%	7,375	5.6%
Average Travel Time to Work (2000)	23.9	mins	23.0	mins	22.3	mins	21.7	mins

This report was produced using data from private and government sources deemed to be reliable. The information herein is provided without representation or warranty.